



clifford beers

MOVING FORWARD



Where healthcare meets community.

System of Care Design Group



This project is supported by the Centers for Medicare and Medicaid Services (CMS) of the U.S. Department of Health and Human Services (HHS), Grant No. 2B2CMS331760-01-00. Contents herein are those of the author(s) and do not necessarily represent the official views of, nor an endorsement, by CMS, HHS or the U.S. Government.





Embrace
New Haven
CT INCK

Where healthcare meets community.

Introductions:
Name, Affiliation,
One feeling word about



Agenda 05-17-2021

Welcome, Introductions

Agenda Overview

Review Recap
Meeting Steps
Driver Diagram - Secondary Drivers

Design Group Medical Health Care - PCMH/+ (NCQA Standards)
Behavioral Health Care - WRAP Around | Care Coordination
System of Care Experience - Response
Social Determinants of Health

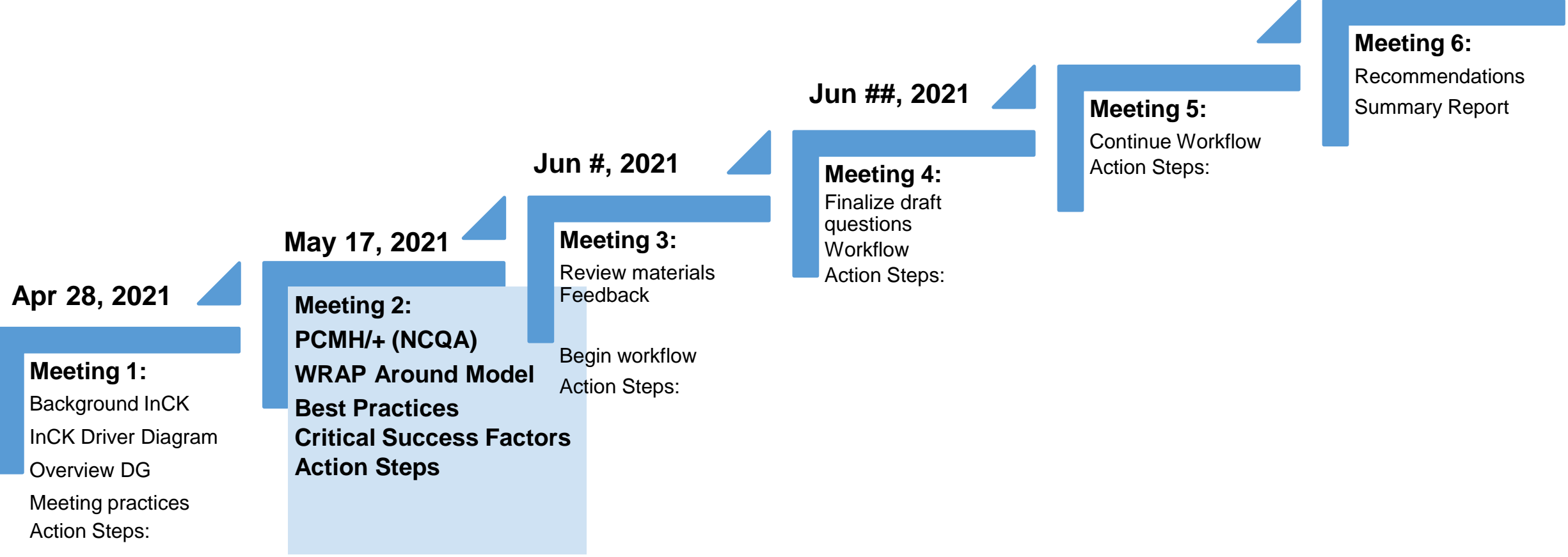
Discussion Integrated Care for Kids - model

Next Steps Schedule 4-5 dates Jun-Aug



Embrace
New Haven
CT INCK

System of Care Design Group - Meeting Plan





CT-InCK Model Aims and Drivers

Primary Drivers

1 Improve Health Outcomes for Children, Adolescents, Pregnant Individuals

2 Child and Family-Centered Service Delivery

3 Reduce Avoidable Inpatient Stays and Out of Home Placement

4 Create Sustainable and Accountable Care Systems for Children, Adolescents, pregnant/postpartum individuals

Secondary Drivers*

1|2|3: Implement Integrated Needs Assessment and Service Integration Level Stratification Process

1|2|3: Timely access to an optimal mix of integrated health-related services

1|3|4: Prioritize Population Health Monitoring and Management

1|2|3: Offer Single Point of Contact for Care Coordination and Case Management

1|2|3: Engage Partnership & Family/ Youth design group to design best system of care for families

1|2|3: Increase Service Accessibility

1|2|3: Multigenerational data to assign Service Integration Level

2|4: Develop State-Specific Alternative Payment Models

1|3|4: Improve Communication and Interoperability between State/Local Systems

System Components - PCMH/PCMH+

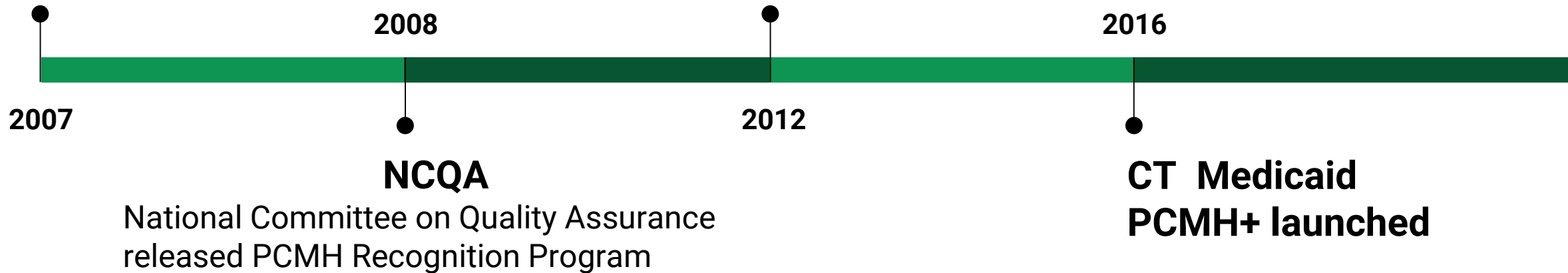
1967

American Academy of Pediatrics
Medical Home Model

PCMH

The Joint Principles of the
Patient-Centered Medical Home

CT Medicaid - PCMH intro
Ended capitation managed care



System Components - PCMH/PCMH+

- Team-Based Care and Practice Organization
- Knowing and Managing Patients
- Patient-Centered Access and Continuity
- Care Management and Support
- Care Coordination and Care Transitions
- Performance Measurement and Quality Improvement





- Care Management services = Care Coordination
- Integrated behavior and physical care services
- Participant and family engagement
- Health information technology

Critical Factors



- Care Coordination
 - Child & Family Team Process
 - Plan of Care
- WFI - WRAP Fidelity Index

System of Care



Embrace
New Haven
CT INCK



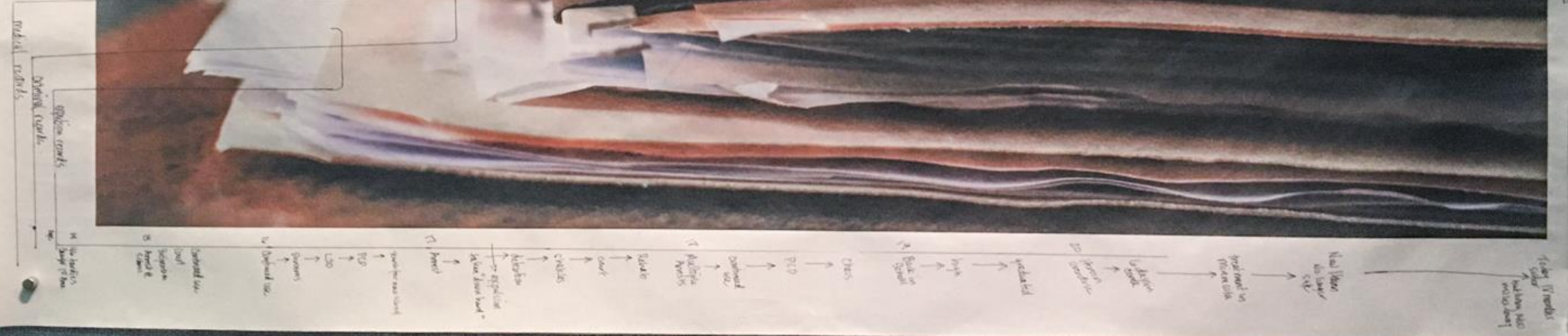
What would the medical file look like if he was poor?

What would the criminal file look like if he was black?

What would the explosion read look like if he was seen as a red flag, who needs help?

Isn't that when it begins?

How do we support families in the time of grief? How do we address what is often an undiagnosed mental health issue and find the right path for them? How do we support them in the time of grief?



System of Care

Provider Service Delivery Criteria

- ✓ Services & Activities
- ✓ Staffing & Training
- ✓ Data
- ✓ Reporting

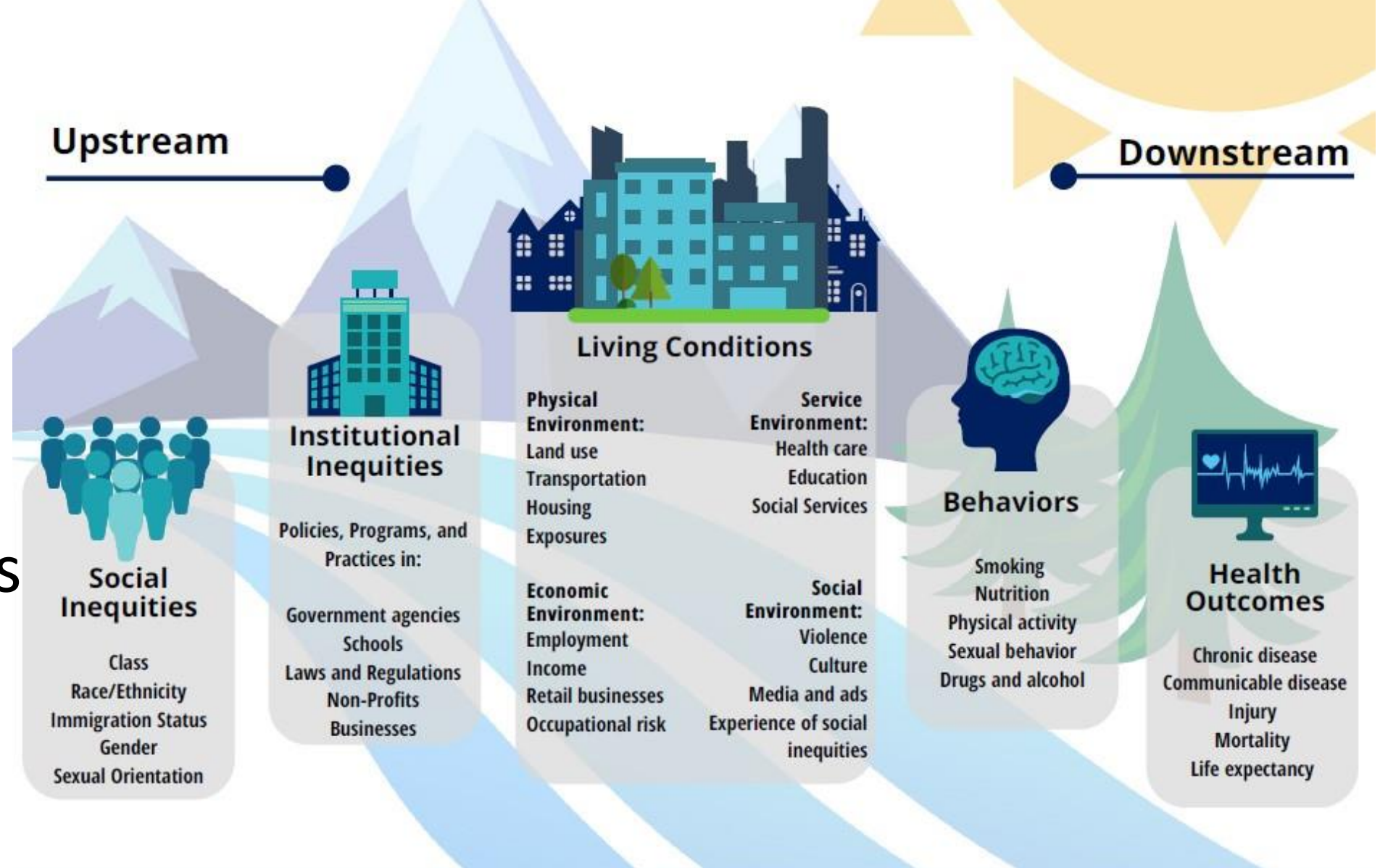
AND:

- + Monitoring & CQI
- + Performance Outcomes
- + APM

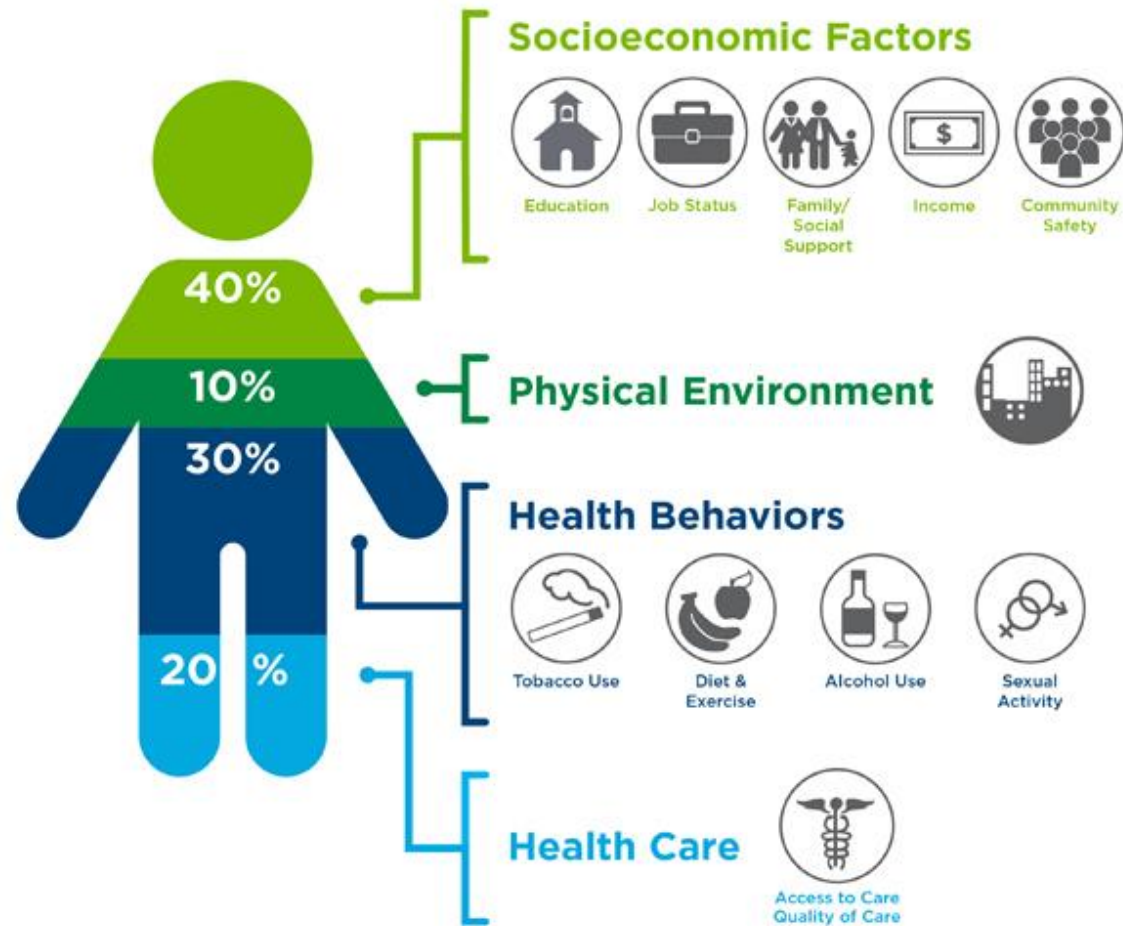


Embrace
New Haven
CT INCK

Social Determinants of Health



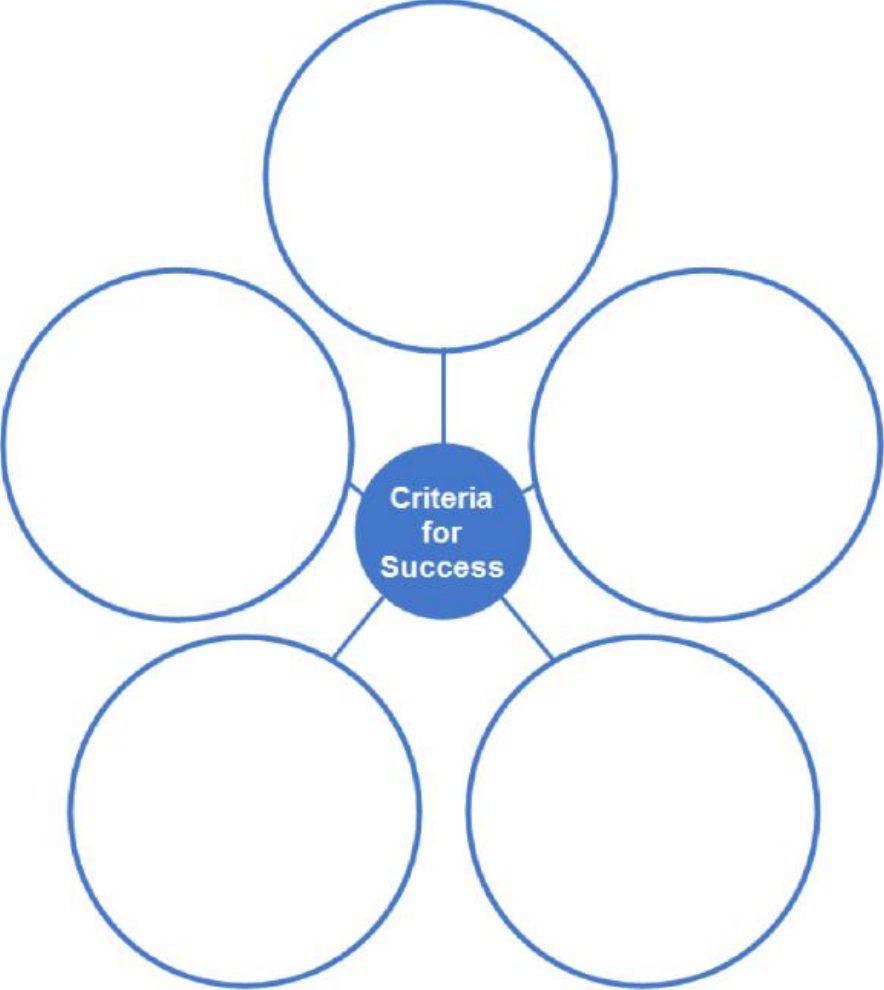
What Goes Into Your Health?



*... what's different ...
about the InCK
System of Care?*

System of Care Design Group - Discussion Questions

*What are the **criteria** needed for this system to work?*



*How will we know if it is **working** and **successful**?*

Next Steps:

1. Meeting dates/schedule - Jun-Jul-Aug - surveys/doodle polls
2. Materials review
3. Resource sharing
4. Feedback loop - surveys

GET CONNECTED



@cliffordbeersct



@cliffordbeersct



@cliffordbeers



www.cliffordbeers.org



(203) 772-1270

Embrace CT-InCK Website:

<https://www.cliffordbeers.org/embrace-new-haven-ct-inck>

Contact Information:

Shayla Ross, InCK Project Administrator

sross@cliffordbeers.org

Seth Poole, Director Systems of Care

spoole@cliffordbeers.org

Kitty Tyrol, Training Manager

ktyrol@cliffordbeers.org

Giselle Carlotta-McDonald, Executive Director PA-NH

Giselle.Carlotta-McDonald@ynhh.org



Embrace
New Haven
CTINCK

