



# CT InCK

Embrace New Haven

Contact us:  
[ctinck@cliffordbeers.org](mailto:ctinck@cliffordbeers.org)

Learn more:  
[www.cliffordbeersccc.org/ct-inck](http://www.cliffordbeersccc.org/ct-inck)



## What is CT InCK?

Connecticut Integrated Care for Kids (CT InCK) is a new and innovative model of care with the goal of **improving access and quality of care for children and families**. With an emphasis on social drivers of health, CT InCK trains **Intensive Care Coordinators (ICCs)** to provide families with the resources and care they need to thrive - at no additional cost to them.

Partnering with HUSKY Health CT, CT InCK is a program led by Clifford Beers in collaboration with other community based organizations to ensure that children and families use their health care coverage effectively and efficiently.

## Member Eligibility

- children from birth to age 21
- pregnant and (up to 1 yr) postpartum individuals
- residing in New Haven zip codes 06510, 06511, 06512, 06513, 06515, or 06519
- covered by Medicare and CHIP Services/ HUSKY Health CT
- unhoused populations (some exceptions apply)



*This project is supported by the Centers for Medicare and Medicaid Services (CMS) of the U.S. Department of Health and Human Services (HHS) as part of a financial assistance award totaling \$12,000,000 in 2024, with 100 percent funded by CMS/HHS. The contents are those of the author(s) and do not necessarily represent the official views of, nor an endorsement, by CMS/HHS or the U.S. Government.*

## Our values at CT InCK



### Intensive Care Coordination

A wholistic and family-driven approach built on trust to address children and families' basic needs, mental and physical health care, and other social drivers of health

### Alternative Payment Model (APM)

Our APM provides a per-member per-month reimbursement, tiered based on the complexity of the members' needs, and supports providers in the **work they are already doing**



**Technology platforms** that use a Care Team approach to visualize a whole family's plan of care and streamline information for providers

### Flexibility Within a Framework

Different business model options to meet the financial needs of your organization and incorporate the CT InCK model in the way that makes the most sense for you



### Community as Care

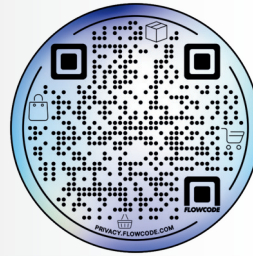
Our Community Health Organizers (CHOs) use their extensive knowledge of New Haven and community resources to help your ICCs every step of the way



# CT InCK

Embrace New Haven

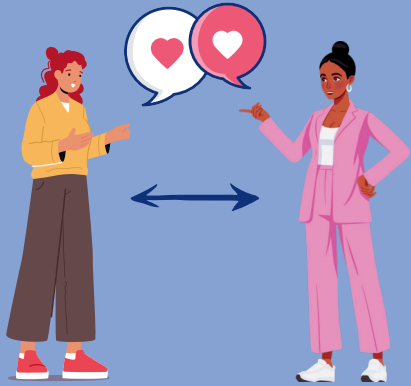
Where health care meets community



Refer members to CT InCK by scanning the QR code and completing our referral form

## Community Health Organizers

Reimagining a community-centered system of care



Community Health Organizer

Intensive Care Coordinator

Our **Community Health Organizers** emulate our grassroots approach and serve to

- assist ICCs with making initial contact and maintaining relationships with families
- leverage their intimate knowledge of New Haven to help ICCs navigate the community
- guide and advise ICCs in connecting families to the resources they need
- listen to the feedback, experiences, and ideas from our providers for model improvement

We envision a model of care that works from the ground up to use community connections for greater good.

We always want to collaborate together to create positive systems change that makes wellness more accessible to all.



ICC + Family Relationship

## Boost Impact and Revenue

Participating in CT InCK gives providers a unique pathway to become Medicaid providers. For those offering care coordination, this means getting compensated for services you're already delivering—without the uncertainties tied to grants or limited donor funding. Our model is built for long-term sustainability, reducing financial risk.

Additionally, many providers may already have members within our target population. This presents a valuable opportunity to expand your reach, serve more individuals, and amplify your impact in the community.

By strategically blending and braiding funding streams, we offer reliable, tailored solutions that seamlessly integrate Intensive Care Coordinators (ICCs) into your operations.

## Our Current Providers



## Become a CT InCK provider today!

By enrolling in CT InCK, you have the opportunity to bring innovative health care to Medicaid/HUSKY children and families in New Haven.

To enroll now, contact us at [ctinck@cliffordbeers.org](mailto:ctinck@cliffordbeers.org)