



# clifford beers

MOVING FORWARD



Where healthcare meets community.

# *System of Care Design Group*



This project is supported by the Centers for Medicare and Medicaid Services (CMS) of the U.S. Department of Health and Human Services (HHS), Grant No. 2B2CMS331760-01-00. Contents herein are those of the author(s) and do not necessarily represent the official views of, nor an endorsement, by CMS, HHS or the U.S. Government.





Where healthcare meets community.

***Introductions: Name, Affiliation,  
What inspired you to join this group?***

# Agenda 04-28-2021

Welcome, Introductions

Agenda

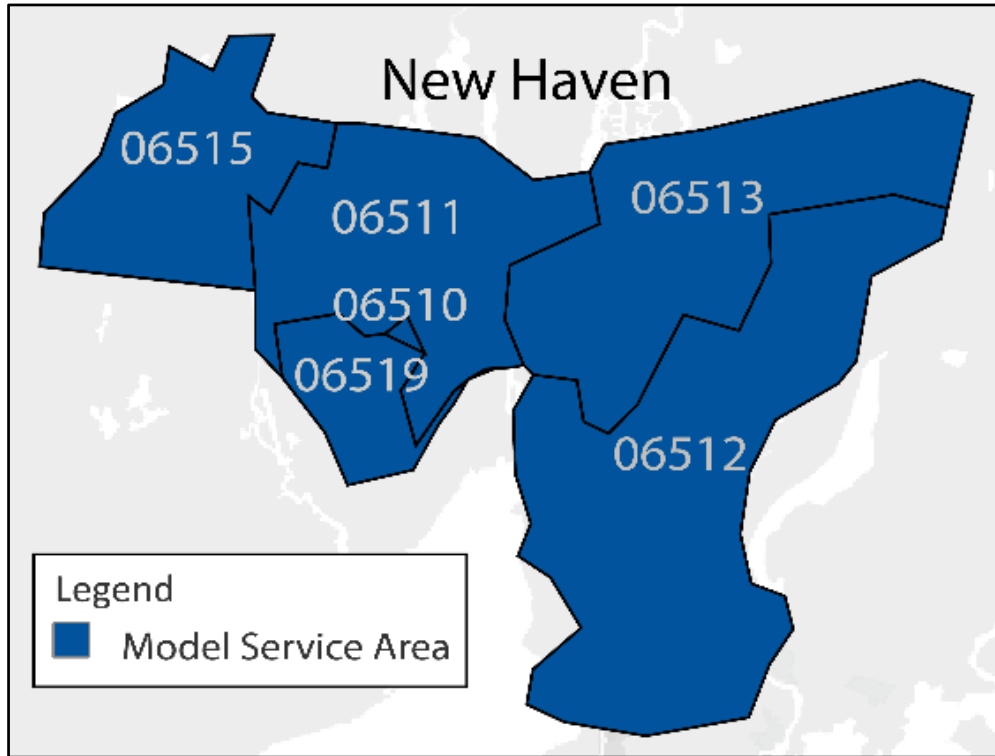
Overview                      CT-InCK Background  
   Driver Diagram

Design Groups      System of Care  
                                 Meetings  
                                 Timeline  
                                 Integrated Care  
                                 Model

Discussion Questions

Next Steps and Contact Information

# Clifford Beers & Connecticut Department of Social Services



## Model Service Area & Population

### Attributed Population:

~29K beneficiaries including:

- Children ages 0<21
- Pregnant/Postpartum(<1 year) Individuals
- Reside in one of 6 New Haven zip codes

## Contributors Driver Diagram Development

- CT Department of Social Services
- Clifford Beers Child Guidance Center

### Successful strategies and lessons learned to date:

- Convening the willingness of community associates to participate in the Partnership Council to act as an advisory board comprised of all members with a vested interest in children's welfare, a commitment to community system change
- Initiating the leveraging of a collective impact of state networks and championing quality family support in effort to strengthen practices and policies embedded in clinical services and care coordination for families identified in need



# CT-InCK Model Aims and Drivers

## Aim Statement

Embrace New Haven (CT-InCK) is a child-centered local service delivery and state payment model aimed to:

- Strive for health equity by working to eliminate racial and ethnic inequities in health and health care services
- Whole family approach to support and strengthen children and families
- Support prevention, early identification, treatment of priority behavioral health challenges, physical health needs and education services
- Improve the health and well-being of children, youth, pregnant and post-partum individuals
- Provide high quality, equitable intensive care coordination focused on strengthening families
- Reduce costs by developing a state payment model
- Reimburse eligible InCK providers (physical and mental health) for intensive care coordination services

## Primary Drivers

- 1 Improve Health Outcomes for Children, Adolescents, Pregnant Individuals**
- 2 Child and Family-Centered Service Delivery**
- 3 Reduce Avoidable Inpatient Stays and Out of Home Placement**
- 4 Create Sustainable and Accountable Care Systems for Children, Adolescents, pregnant/postpartum individuals**

## Secondary Drivers\*

- 1|2|3: Implement Integrated Needs Assessment and Service Integration Level Stratification Process
- 1|2|3: Timely access to an optimal mix of integrated health-related services
- 1|3|4: Prioritize Population Health Monitoring and Management
- 1|2|3: Offer Single Point of Contact for Care Coordination and Case Management
- 1|2|3: Engage Partnership & Family/ Youth design group to design best system of care for families
- 1|2|3: Increase Service Accessibility
- 1|2|3: Multigenerational data to assign Service Integration Level
- 2|4: Develop State-Specific Alternative Payment Models
- 1|3|4: Improve Communication and Interoperability between State/Local Systems

## Measures\*

- Well-Child Visits in the first 15 months of Life
- Well-Child Visits Ages 3-6
- Adolescent Well-Care Visits Ages 12-21
- Ambulatory Care: Emergency Department Visits
- Follow-up after Hospitalization for Mental Illness
- Depression Screening and Follow-up
- Use of First-Line Psychosocial Care for Children and Adolescents on Antipsychotics
- Food Security Assessment
- Housing Stability Assessment
- Kindergarten Readiness
- Chronic Absenteeism
- Maternal depression and/or SUD screening

This project is supported by the Centers for Medicare and Medicaid Services (CMS) of the U.S. Department of Health and Human Services (HHS), Grant No. 2B2CMS331760-01-00. Contents herein are those of the author(s) and do not necessarily represent the official views of, nor an endorsement, by CMS, HHS or the U.S. Government.



# Design Groups

1

## Data Governance

Consent Forms and Processes | Quality Measures | Dashboards | Data Protections

2

## System of Care Design / Model

Services bundled based on ages and needs: Perinatal, 1-5, 6-12, 13-18, 18-21

3

## Stratification & Needs Assessment

Selection of Data/Data Sources | Methodology | Develop Needs Assessment

4

## Alternative Payment Model

Review Proposed Waivers | Develop Attribution Methodology | Create Workforce

5

## Engagement & Communication

Communication strategies to engage all populations

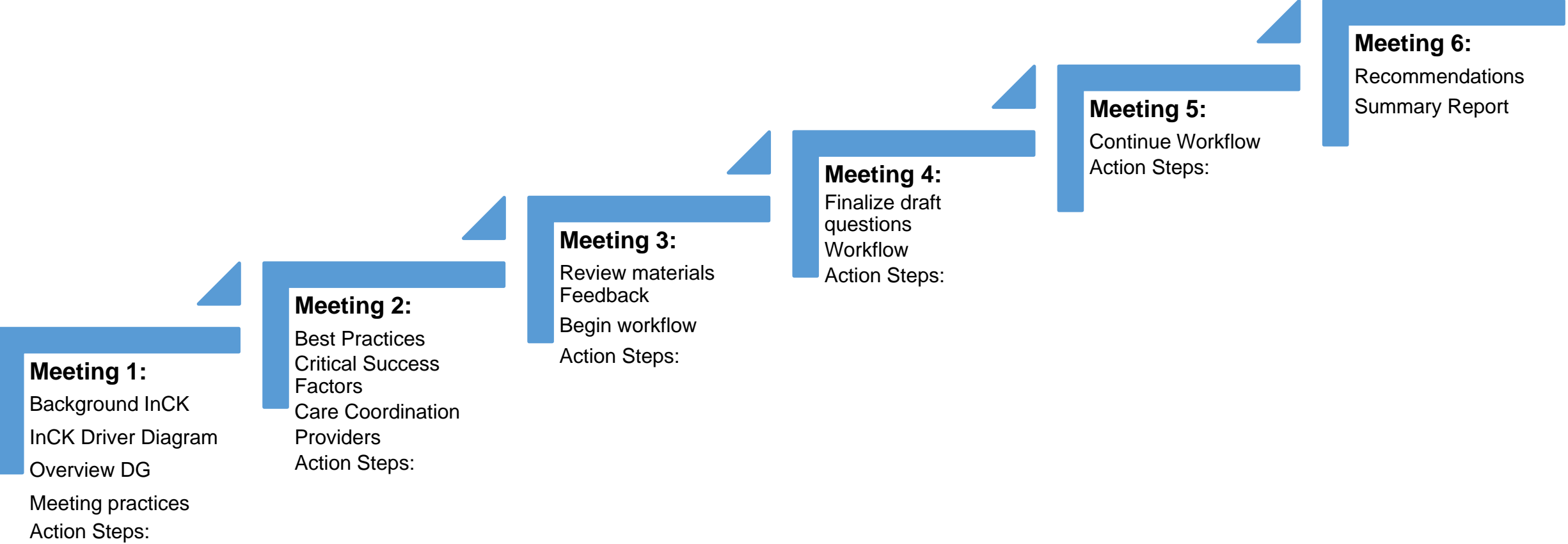
6

## Provider Eligibility & Enrollment

Providers | Provider Standards and Qualifications



# System of Care Design Group - Meeting Plan

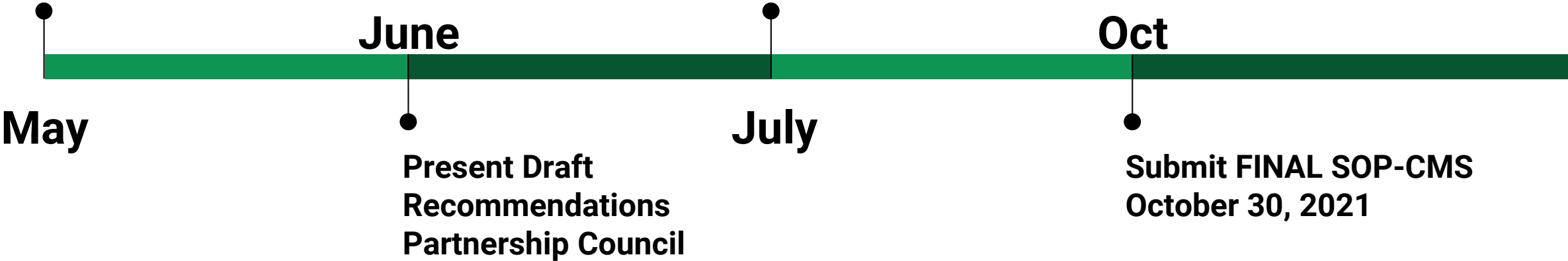




# System of Care Design Group - 2021 Timeline

Design Groups  
Schedule 6-8 Meetings

Submit DRAFT SOP -CMS  
July 30, 2021



# System Components

## Providers



Integrated  
Care  
Coordination



## Member Experience

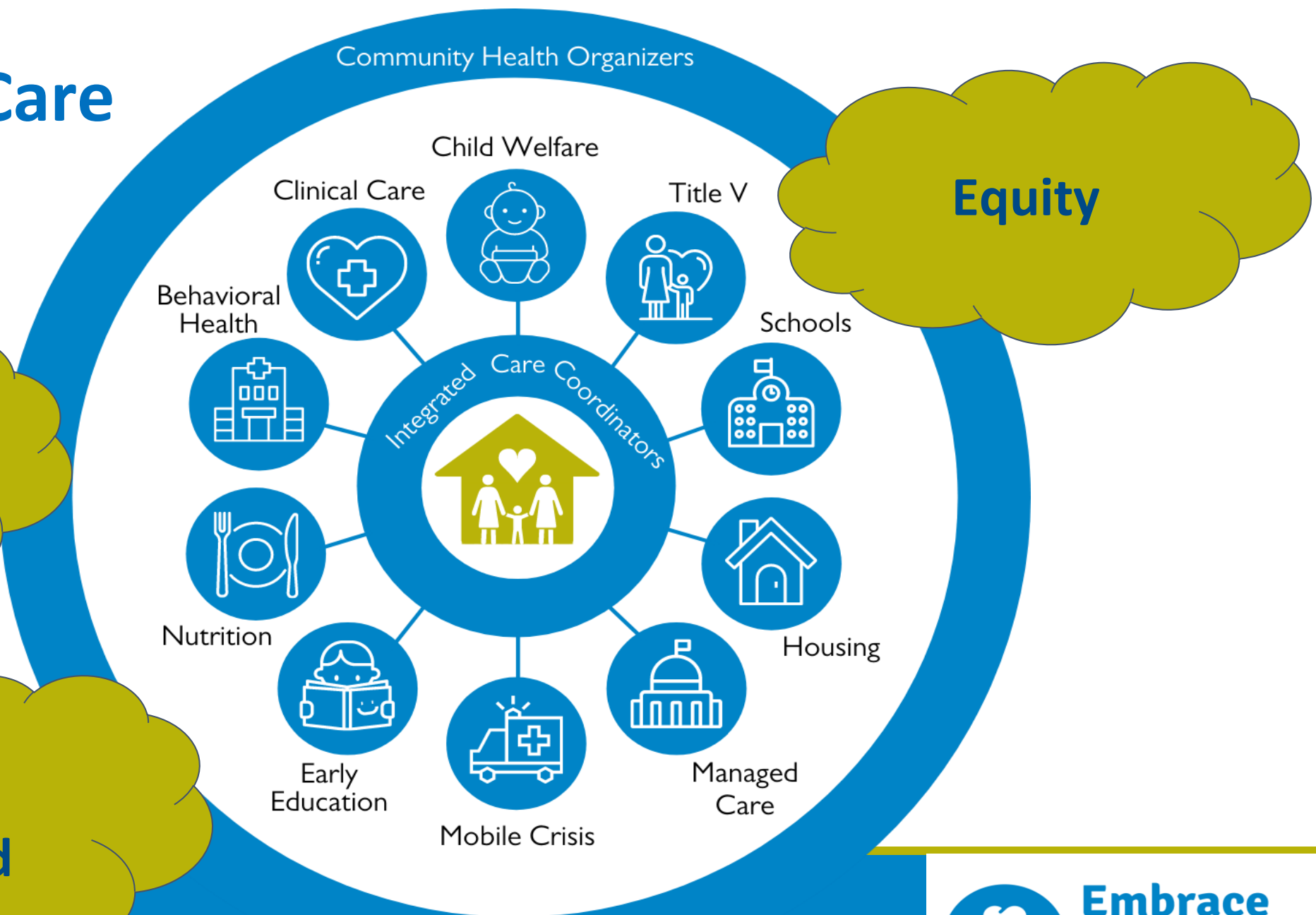


**Embrace**  
**New Haven**  
CT INCK

# System of Care Model

**WRAP  
Around Care  
Coordination**

**Trauma  
Informed**



# System of Care Design Group - Discussion/Questions

1. How do we center equity (health and race) in our design work?
2. Who else can be included in this design group/process to make it more equitable?
3. When success is achieved, how will families benefit?

# Next Steps:

## 1. Meeting dates/schedule - doodle polls

Meeting # 2 (week of May 10)

[https://doodle.com/poll/9f2gsvaic43dkemq?utm\\_source=poll&utm\\_medium=link](https://doodle.com/poll/9f2gsvaic43dkemq?utm_source=poll&utm_medium=link)

Meeting #3 (week of May 17)

[https://doodle.com/poll/m5bcvsk6ikfhzw8p?utm\\_source=poll&utm\\_medium=link](https://doodle.com/poll/m5bcvsk6ikfhzw8p?utm_source=poll&utm_medium=link)

## 2. June meetings TBD

## 3. Materials review/Resource sharing

## 4. Feedback loop - surveys



## GET CONNECTED



@cliffordbeersct



@cliffordbeersct



@cliffordbeers



www.cliffordbeers.org



(203) 772-1270

Embrace CT-InCK Website:

<https://www.cliffordbeers.org/embrace-new-haven-ct-inck>

Contact Information:

Shayla Ross, InCK Project Administrator

[sross@cliffordbeers.org](mailto:sross@cliffordbeers.org)

Seth Poole, Director Systems of Care

[spoole@cliffordbeers.org](mailto:spoole@cliffordbeers.org)

Kitty Tyrol, Training Manager

[ktyrol@cliffordbeers.org](mailto:kytyrol@cliffordbeers.org)

Giselle Carlotta-McDonald, Executive Director PA-NH

[Giselle.Carlotta-McDonald@ynhh.org](mailto:Giselle.Carlotta-McDonald@ynhh.org)



**Embrace**  
**New Haven**  
CTINCK



**clifford**  
**beers**

MOVING FORWARD